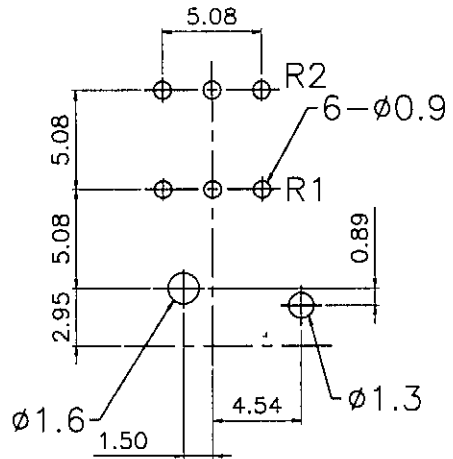
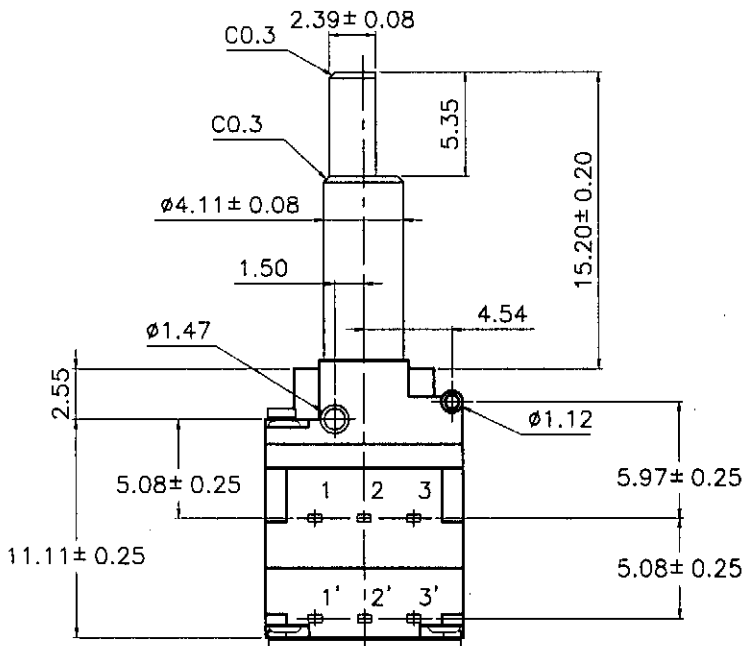


shaft shown in full C.C.W. position



Mounting hole detail



Viewed from solder side of PCB

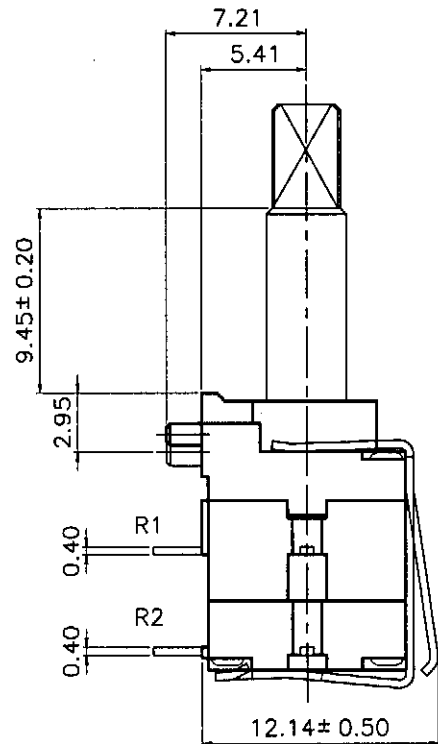


TABLE 2

PIN OUTPUT (HEXADECIMAL)																
switch position	C.W (337.5°)															
	1	2	3	4	5	6	7	8	9	10	11	12	13	14	15	16
R1 (T1-2)	0	1	0	1	0	1	0	1	0	1	0	1	0	1	0	1
R1 (T2-3)	0	0	0	0	1	1	1	1	0	0	0	0	1	1	1	1
R2 (T1'-2')	0	0	0	0	0	0	0	0	1	1	1	1	1	1	1	1
R2 (T2'-3')	0	0	1	1	0	0	1	1	0	0	1	1	0	0	1	1

3				NAME	EC1020-16P-16CC-F15		
2				DRAWING NO	EC1020		
1				DRAWN BY	CHECK BY	APPROVED BY	
NO	DATE	DESCRIPTION					
TOLERANCE		SCALE					
less than 10±0.3		5/2					
above 10-30±0.5		DIMENSION					
above 30-100±1.0		m/m					

MODEL: EC1020-16P-16CC-F15

Mechanical characteristics: 機械的性能:

Item<項目>	Test methods<試驗方法>	Performance<性能>
Total rotational angle 全迴轉角度	Determined by measuring the rotational angle when the shaft is turned from the end position of terminal 1 to the end position of terminal 3. 軸置予 1 端最底部移往 3 端最底部之旋轉角度	337.5°±5°
Click position C.C.位置	This mechanism provides the click feel during operation. 在動作期間,感覺結構供給的"click".	16detent
Click torque C.C.扭力	Determined by measuring the click torque necessary to turn the shaft. Unless otherwise specified, measurement shall be made at ambient temperature of 5 to 35°C. 測定 click 扭力必須要旋轉軸, 周圍溫度在 5~35°C 時, 旋轉軸時, 經過 click 停頓點時所需的力量, 特殊品除外.<以扭力計得>	144~360gf-cm
Shaft rotational stopper strength 軸的止迴轉強度	With the shaft(lever) placed at the end of terminal 1, a specified torsional moment(force) shall be applied in that direction for 10 seconds. Next, the shaft(lever) shall be placed at the end of terminal 3 and a specified torsional moment(force) shall be applied similarly, to check the operating part and other related sections for deformation, breakage, etc. 軸從 1 端移至止擋點或從 3 端移至止擋點 10 秒後, 直至破壞之力量.< 以扭力計測得>	≥ 3.6 kgf-cm
Push-pull strength 軸推拉強度	A specified force shall be applied in the axial direction of the shaft for 10 seconds to check the operating part and other sections for deformation, breakage, operating condition, etc. 以軸的軸線方向施加力量, 經 10 秒後, 核對部份動作之有無斷面變形、破損、等情況.	≥ 9.1kgf

Electrical characteristics: 電氣的性能:

Item<項目>	Test methods<試驗方法>	Performance<性能>
Withstand voltage 耐電壓	Measured by applying AC voltage to the specified spot for a minute to check for arc, burning, dielectric breakdown and other abnormalities. Respective terminals may be tested in group. The locations described below shall be tested unless otherwise specified. However, if the section concerned is so constructed as to conduct, that particular part shall not be tested. 施以固定交流電壓 1 分鐘, 檢查有無破壞、燒損、異常. 但在原來結構上已導通部份, 則不進行測試.	More than 100V AC (1 minute)

MODEL: R102AE-AA2-16C21-H03

Item<項目>	Test methods<試驗方法>	Performance<性能>
Rated power 定格電力		0.15A / 30V DC
Contact resistance 接觸阻抗		100 mΩ

Durability:耐久的性能:

Item<項目>	Test methods<試驗方法>	Performance<性能>
Rotational life 迴轉壽命	The shaft shall be turned at a speed of 360 cycles per hour(counting 1 reciprocating motion as 1 cycle) and 5,000~8,000 cycles a day over 90% of the effective rotational angle.Unless otherwise specified, the following requirements shall be met after the test is completed: 在無負荷情況下,軸以每小時 360 次的速度(有效來回 1 遍稱爲 1 次),有效移動距離達 90%以上,每日 5,000~8,000 次的使用次數測試,	10,000 cycles