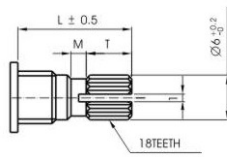
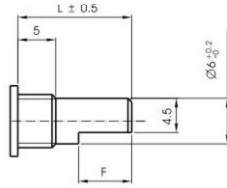


KQ-TYPE



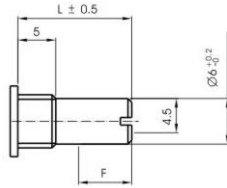
	10KQ	12KQ	13KQ	15KQ	20KQ	25KQ	30KQ	35KQ
L	10	12	13	15	20	25	30	35
T	3	4	5	6	10	12	12	12
M	1	1	1	1	2	2	4	4

F-TYPE



	10F	12F	15F	20F	25F	30F	35F
L	10	12	15	20	25	30	35
F	4	3.5	7	10	12	12	14

RE-TYPE



	10RE	15RE	20RE	25RE	30RE	35RE	40RE
L	10	15	20	25	30	35	40

Mechanical characteristics: 機械的性能

Total rotational angle 全迴轉角度	$260^{\circ} \pm 10^{\circ}$
Rotational torque 迴轉扭力	15~200 gf.cm
Rotation stopper strength 止迴轉強度	4 kgf.cm
Switch working angle 開關工作角度	$40^{\circ} \pm 5^{\circ}$
Switch working torque 開關工作動力	70~400 gf.cm

Electrical characteristics: 電氣的性能

Total resistance 總阻值	500Ω~1MΩ
Total resistance tolerance 總阻值容許差	±20%
Rated power 定格電力	Linear taper 0.1W / Other taper 0.05W
Max.operating voltage 最高使用電壓	150V AC / 200V DC
Slide noise 滑動噪音	less than 100mV
Resistance taper 阻值線性	A/B/C
Residual resistance 殘留阻值	20Ω max.
Insulation resistance 絕緣抵抗	more than 50MΩ at DC 500V
Withstand voltage 耐電壓	More than 500V AC (1minute)
Switch power rating 開關承受負載	12V/DC , 1A

Switch contact resistance
開關接觸電阻

20mΩ max.

Durability: 耐久的性能

Rotational life
迴轉壽命

10,000 cycles